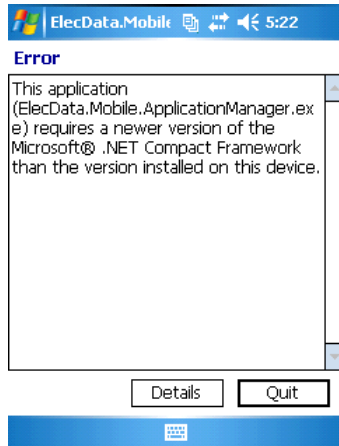


Reason

When attempting to start Sentinel GIS, the program will not start and a Microsoft .NET Error displays.



The Sentinel GIS application manager requires Microsoft .NET Compact Framework 3.5 or greater. This is built into most Windows Mobile 6.5 devices, but is not included in Windows Mobile 5 or 6.1.

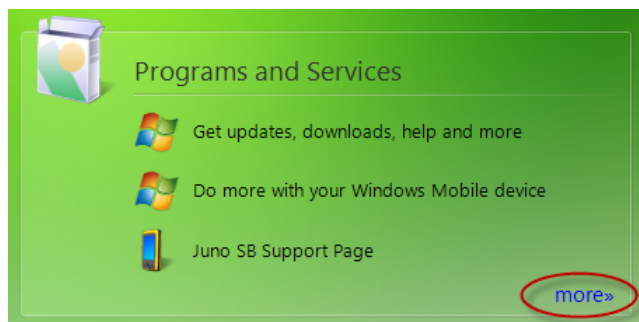
Solution

Install Microsoft .NET Compact Framework 3.5 or greater. This can be downloaded from www.microsoft.com. Search for **.NET Compact Framework 3.5 Redistributable** or use the following link: <https://www.microsoft.com/en-ca/download/details.aspx?id=65>

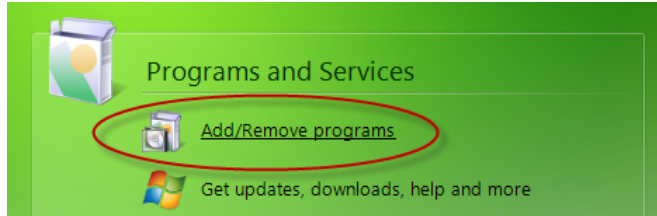
This will install the .NET Compact Framework to your computer. To deploy to your mobile device, connect the mobile to your PC using Windows Mobile Device Center. The follow these instructions.

Windows Mobile Device Center Instructions

1. Open the Windows Mobile Device Center.
2. Click Programs and Services, then 'more.'



3. Click Add/Remove programs.



4. Check the box for 'Microsoft .NET CF 3.5'
5. Click OK to install to the mobile device