


Overview

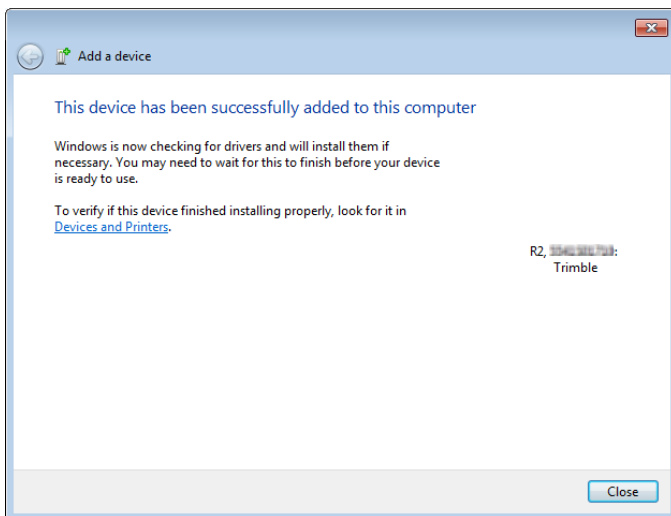
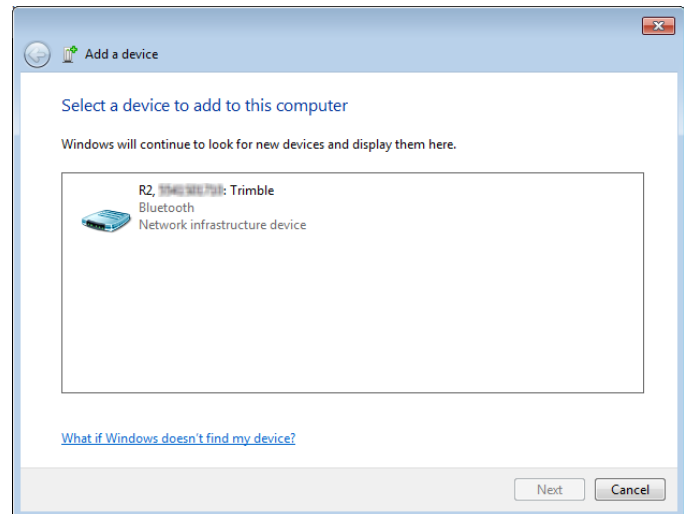
The Trimble® R1 and R2 GNSS receivers can be connected via Bluetooth® to tablets and computers running Windows® 7, 8.x, and 10 to obtain high accuracy data collection or for tablets and computers with no internal GPS.

Note: To place the R1 GNSS receiver in Bluetooth pairing mode, press and hold the Power button until the

(LED) LED flashes  blue.

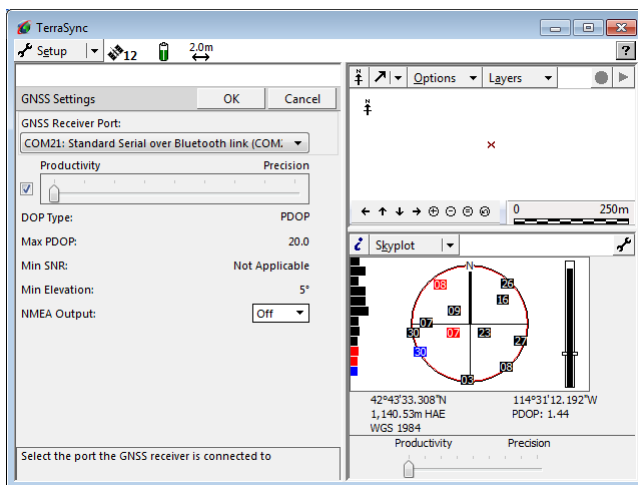
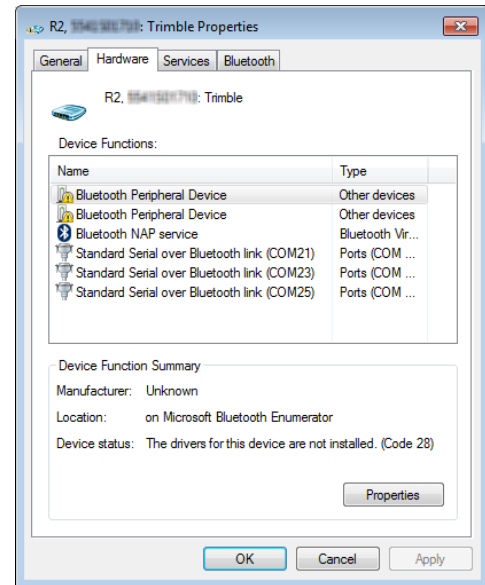
Bluetooth Connection

- In the system tray, click the up arrow and click the Bluetooth icon.
- Choose Add a Device from the list of options.
- The Add a Device windows should open and start searching for available Bluetooth devices.
- Match the model and serial number to the one shown on the screen. Select the correct device and then click Next.



- If asked to select a pairing method choose *Enter the device's pairing code* option. By default, the pairing code is 0000 or 1111. Enter it in the dialog and then click Next
- After the device has been successfully connected, wait for any drivers to finish installing then select Close. You will be able to see any drivers that are installing by clicking the up arrow in the system tray.


- In the system tray, click the up arrow and click the Bluetooth icon.
- Choose Show Bluetooth Devices from the list of options.
- Right click on your connected receiver and choose Properties.
- Choose the Hardware tab.
- Under Device Functions, it will list the Bluetooth COM ports that the receiver is using. The COM port with the lowest number will be the one that you want to use. In this example it's COM 21.



Connecting in TerraSync

- Open TerraSync under Start> All Programs> Trimble> TerraSync.
- Change the dropdown to Setup.
- Tap on GNSS Settings.
- Change the COM port to the COM port from the Bluetooth Properties which in this case is COM 21.
- Click OK to save your settings.
- Tap the GNSS button to connect to the receiver.

Connecting in ArcPad

- Open ArcPad under Start> All Programs> ArcGIS> ArcPad.
- Tap the arrow below the satellite icon  and choose GPS Preferences
- Change the Port to the COM port from the Bluetooth Properties which in this case is COM 21.
- Click OK to save your settings.
- Tap the satellite icon to connect to the receiver.

