


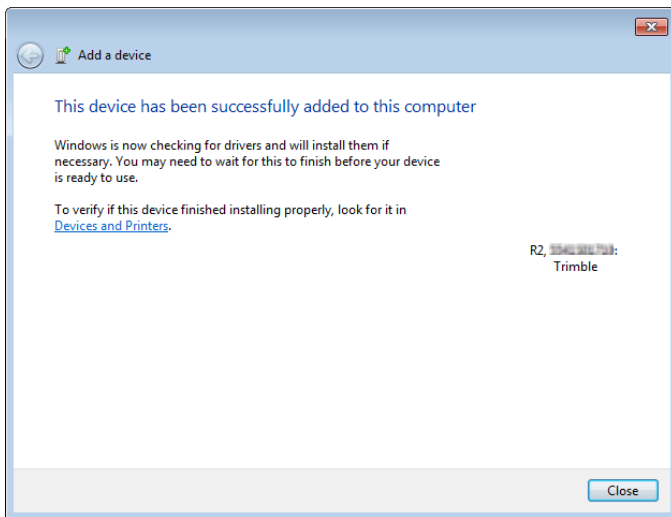
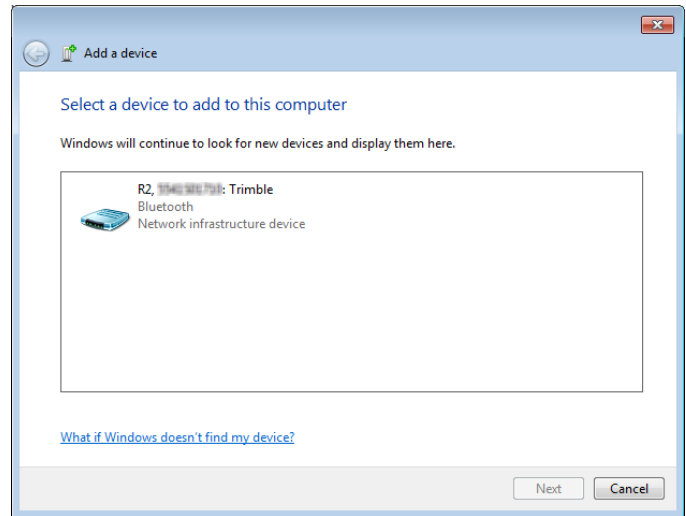
Overview

The Trimble® R1 and R2 GNSS receivers can be connected via Bluetooth® to tablets and computers running Windows® 7, 8.x, and 10 to obtain high accuracy data collection or for tablets and computer with no internal GPS.

Note: To place the R1 GNSS receiver in Bluetooth pairing mode, press and hold the Power button until the (••) LED flashes  blue.

Bluetooth Connection

- In the system tray, click the up arrow and click the Bluetooth icon.
- Choose Add a Device from the list of options.
- The Add a Device windows should open and start searching for available Bluetooth devices.
- Match the mode land serial number to the one shown on the screen. Select the correct device and then click Next.



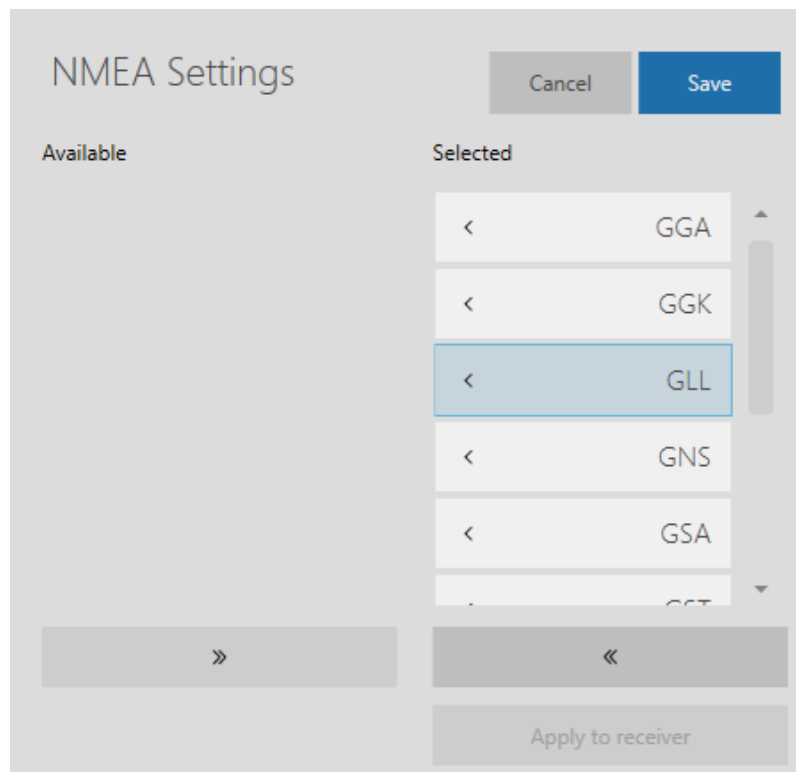
- If asked to select a pairing method choose *Enter the device's pairing code* option. By default, the pairing code is 0000 or 1111. Enter it in the dialog and then click Next
- After the device has been successfully connected, wait for any drivers to finish installing then select Close. You will be able to see any drivers that are installing by clicking the up arrow in the system tray.

Configuring the NMEA setting in GNSS Status

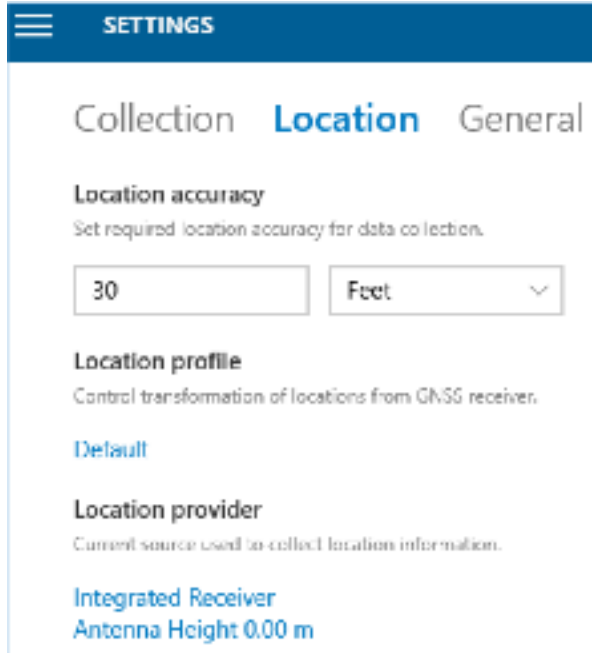
1. Open the GNSS Status app.
2. While on the Home screen, click Select New Receiver. Select your receiver from the list.
3. Click the button with the two plugs to connect to it.




4. Go to the NMEA Settings.
5. Select each NMEA option to move it from Available to Selected. Click on the Save button to save the configuration then click the Apply to Receiver button to apply the settings to the receiver.
6. If asked to select a port, choose port SPP1. You should get a message that the NMEA settings have been applied.
7. Close the GNSS Status app.



Selecting the Receiver in Collector for ArcGIS



1. Open the Collector for ArcGIS app.
2. Sign in with your AGOL credentials.
3. Click the Menu button  and go to Settings.
4. Once in the Settings, go to the Locations tab.
5. Click on Integrated Receiver under the Location Provider section. This will bring up the GPS Receivers window.

6. If your receiver isn't listed under Other, click on Add a receiver. If the receiver is already in the list under Other, skip to step 9.
7. The Add Receiver window will appear. Wait for the list of devices to populate and select your device from the list then click Continue.
8. Enter in the antenna height and click Add which will then take you back to the GPS Receivers window.
9. Select your antenna from the list of Other. Click on it then click the Switch button.
10. It may take a moment, but your receiver should switch to be under Current.
11. Click the Close button to exit the GPS Receivers window.

