

Trimble Positions has multiple parts that need to be installed: the Positions Desktop add-in, Positions Arcpad® or ArcGIS® Mobile Extension. If you are using ArcGIS for Windows® Mobile, then you will also need to install the Trimble Positions extension for Mobile Project Center. In this support note we will give you the steps on installing the Positions Desktop Add-in as a single use license. If you are looking for directions on how to install Trimble Positions as a floating license through the license manager please see our support note: [Installing and Setting Up the License Manager for Use with GPS Pathfinder Office®, GPS Analyst™, and Positions™ Desktop add-in.](#)

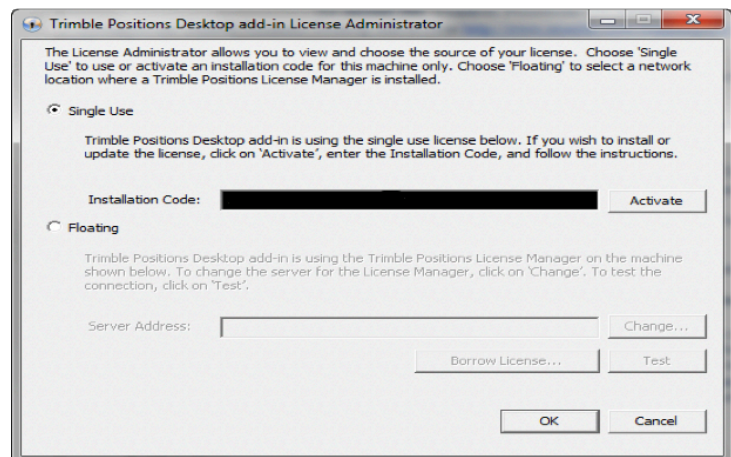
To install the Trimble Positions Desktop add-in:

1. You will need to have ArcGIS 10.1 or later installed prior to install the Trimble Positions Desktop add-in. Check the [compatibility chart](#) to make sure you get a version of Positions Desktop add-in that is compatible with your computer and version of ArcMap.
2. Download the Trimble Positions Desktop add-in installer from the [Trimble website](#). You will need full administrative rights to your computer while installing this software.
3. If you have an older version of Trimble Positions Desktop Add-in or any version of GPS Analyst installed, you must uninstall it before starting the installation process for Positions Desktop add-in. You can uninstall the software by going to *Start> Control Panel> Programs and Features or Add/Remove Programs*. Select the software then press the uninstall button.

Note-When installing as a single use license, you do NOT need to install the Trimble Positions License Manager. If you are switching from a floating license to a single use license, make sure to go to Start/ Control Panel/ Add or Remove Programs and uninstall the license manager if it is installed to the same computer as the software.

4. Run the installation file that you just downloaded from the Trimble website. Follow the on-screen instructions to install the Trimble Positions Desktop add-in.
5. Use the *Trimble Positions License Administrator Utility* under *Start> All Programs> Trimble> Trimble Positions Desktop add-in* to license the add-in, by activating as Single-Use license from the Trimble Positions License Administrator.

- Select *Single Use* and click *Activate*. Insert your Trimble Positions Desktop add-in
- Installation code and select *Next*.
- Choose the option *I wish to activate Trimble Positions Desktop add-in over the Internet* and select *Next*.
- The license will then be activated and you are ready to move on to the next steps. If you have any issues getting the license to activate, please contact your Frontier Precision sales rep for support.





Installing Trimble® Positions™ Desktop Add-in

October 11, 2016

6. Open the *Trimble Positions Desktop Configuration* software. Go to *Start> All Programs> Trimble> Trimble Positions Tools> Desktop Configuration*, and configure your installation.

Note – To change the current configuration, the application must be used with full administrator privileges. If you do not have administrator privileges, most of the application's controls will be disabled.

- Click Add/Edit a new configuration.
- There are two configuration types you can create: – Single-user: this profile will be associated with the current user. This is useful when creating a configuration profile that can roam within an organization over many PCs, or when using an infrastructure based on virtual machines or using Citrix. – All users on the PC: the configuration profile will be stored locally on this PC and must be manually replicated to other PCs.
- Select either Single-user or All user on the PC.
- If you are installing Positions Desktop add-in for the first time, select Create a new SQLiteJet database for me or Create a new MDB database for me. Click where it says to Click here to create a files.
- If you have previously installed Positions Desktop add-in and wish to use your old configuration, select I will select a SQLite database file or I will select a MDB data file. Click where it says to Click here to select a file and browse to the old configuration. For All users the file path is C:\ProgramData\Trimble\Positions\10.1 and for single-user the file path is C:\Users\%AppData%\Roaming\Trimble\Positions\10.1. If you are asked to update the old configuration, choose Yes.

Note– the option for creating or selecting a SQLite database is only available if you have SQLite ODBC drive installed. If you would like to set up a Trimble Position Desktop Configuration your- self, please refer to the [Trimble Positions Desktop add-in User Guide](#).

- Click *Test Data Source*. If the connection is successful, a message displays informing you that the selected data source is correctly set. If this fails, make sure you have entered the configuration data correctly, and that your database is accessible and running before trying again.
 - Click *Save and apply configuration*. Click *Back to Main page*. You should now see the current configuration information filed out. Click *Exit*
7. Start ArcGIS for Desktop.
 8. Before you open a Map document (MXD file), make sure that the Trimble Positions Desktop add-in is enabled; on the ArcGIS for Desktop menu bar, select *Customize> Extensions> Trimble Positions*.

Note– The ArcPad Data Manager will also need to be enabled to have full functionality of the Trimble Positions Desktop add-in toolbar for use with ArcPad.

9. The installation for Trimble Positions Desktop add-in is now complete and the installation of the Trimble Positions ArcPad or Mobile extension can be started.