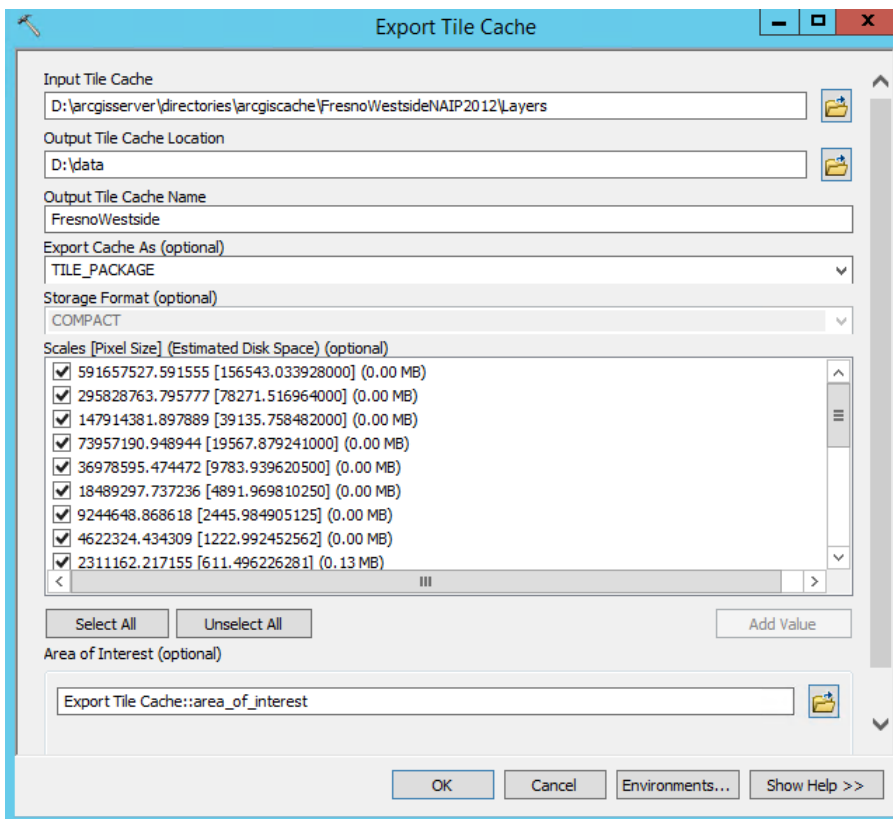


## Reason

When the iOS mobile application is used in offline mode, basemap data is either downloaded to the device from Esri basemap sources, or the application can use a local “tile package” that is created in ArcGIS Desktop and copied to the device through iTunes. Esri basemap sources (such as the Imagery basemap) are limited to 100,000 tiles, which roughly translates to a large city. Larger geographic areas cannot be downloaded from Esri basemap sources automatically, so a tile package can be created from user data.

## Instructions

The ArcGIS tile package (.tpk file) can be created from a cached map service. Creating and publishing a cached map service to ArcGIS Server is well-documented in Esri help resources and is not covered in this article. The cached map service should be created in the WGS 1984 (Web Mercator auxiliary sphere) spatial reference. After the cached map service is created, the Export Tile Cache geoprocessing tool is used to create a TPK file.



After the .TPK file is created, it will need to be copied from the server to a computer that has iTunes so that it can be sent to the FieldSeeker application. Because the .TPK file may be very large (1-2 GB is common), you may want to use Google Drive to copy and download the file if the server is not on your or the customer's network.

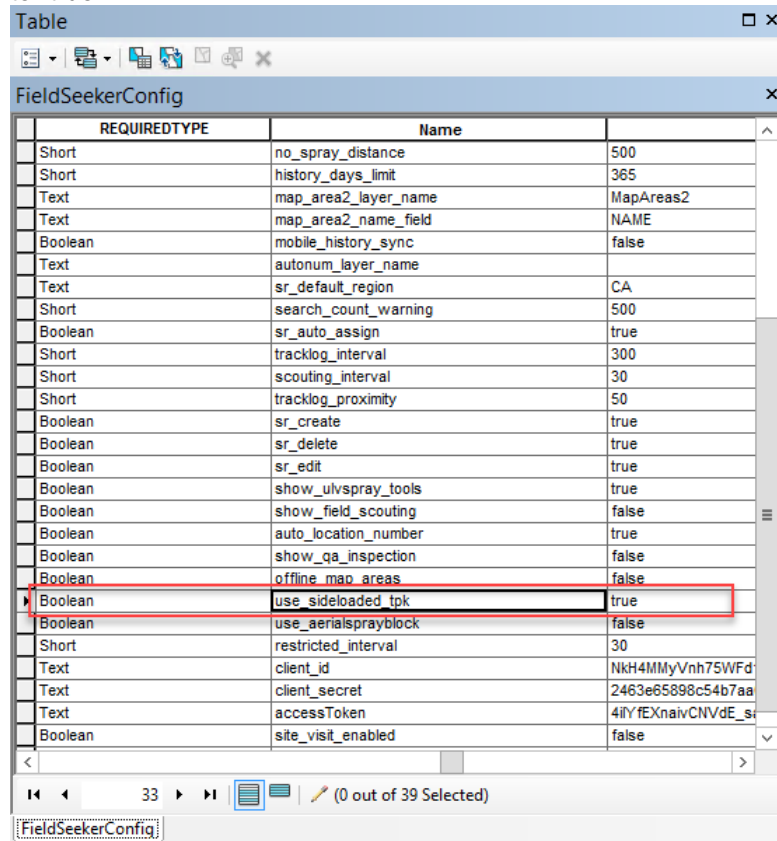
1

154 1<sup>st</sup> Avenue West, Jerome, ID 83338  
Ph: 208-324-8006 <http://www.frontierprecision.com>

After the .TPK file is locally available, a setting needs to be changed on the FieldSeeker database side, and then the .TPK file needs to be side-loaded to the FieldSeeker app. Once loaded, FieldSeeker Mobile iOS will automatically use it based on the configuration setting.

## Change the FieldSeekerConfig Setting for "use\_sideloaded\_tpk"

The configuration setting has to be changed manually in the FieldSeekerConfig table. Set "use\_sideloaded\_tpk" to "true".



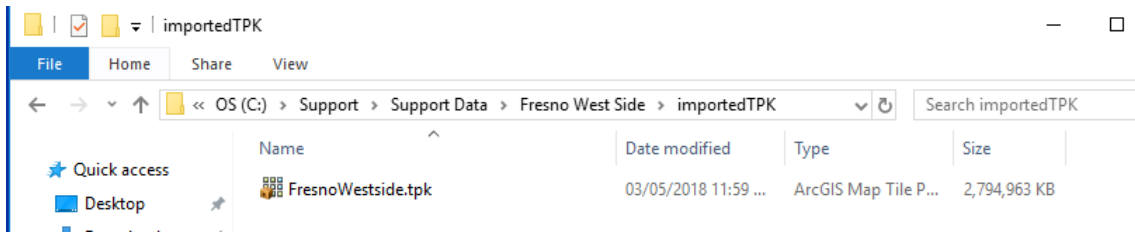
REQUIREDTYPE	Name	
Short	no_spray_distance	500
Short	history_days_limit	365
Text	map_area2_layer_name	MapAreas2
Text	map_area2_name_field	NAME
Boolean	mobile_history_sync	false
Text	autonum_layer_name	
Text	sr_default_region	CA
Short	search_count_warning	500
Boolean	sr_auto_assign	true
Short	tracklog_interval	300
Short	scouting_interval	30
Short	tracklog_proximity	50
Boolean	sr_create	true
Boolean	sr_delete	true
Boolean	sr_edit	true
Boolean	show_ulvspray_tools	true
Boolean	show_field_scouting	false
Boolean	auto_location_number	true
Boolean	show_qa_inspection	false
Boolean	offline_map_areas	false
Boolean	use_sideloaded_tpk	true
Boolean	use_aerialsprayblock	false
Short	restricted_interval	30
Text	client_id	NkH4MMMyVnh75WFd
Text	client_secret	2463e65898c54b7aa
Text	accessToken	4iYfEXnaivCNVdE_s
Boolean	site_visit_enabled	false

## Copy the Tile Package to FieldSeeker Mobile Using iTunes

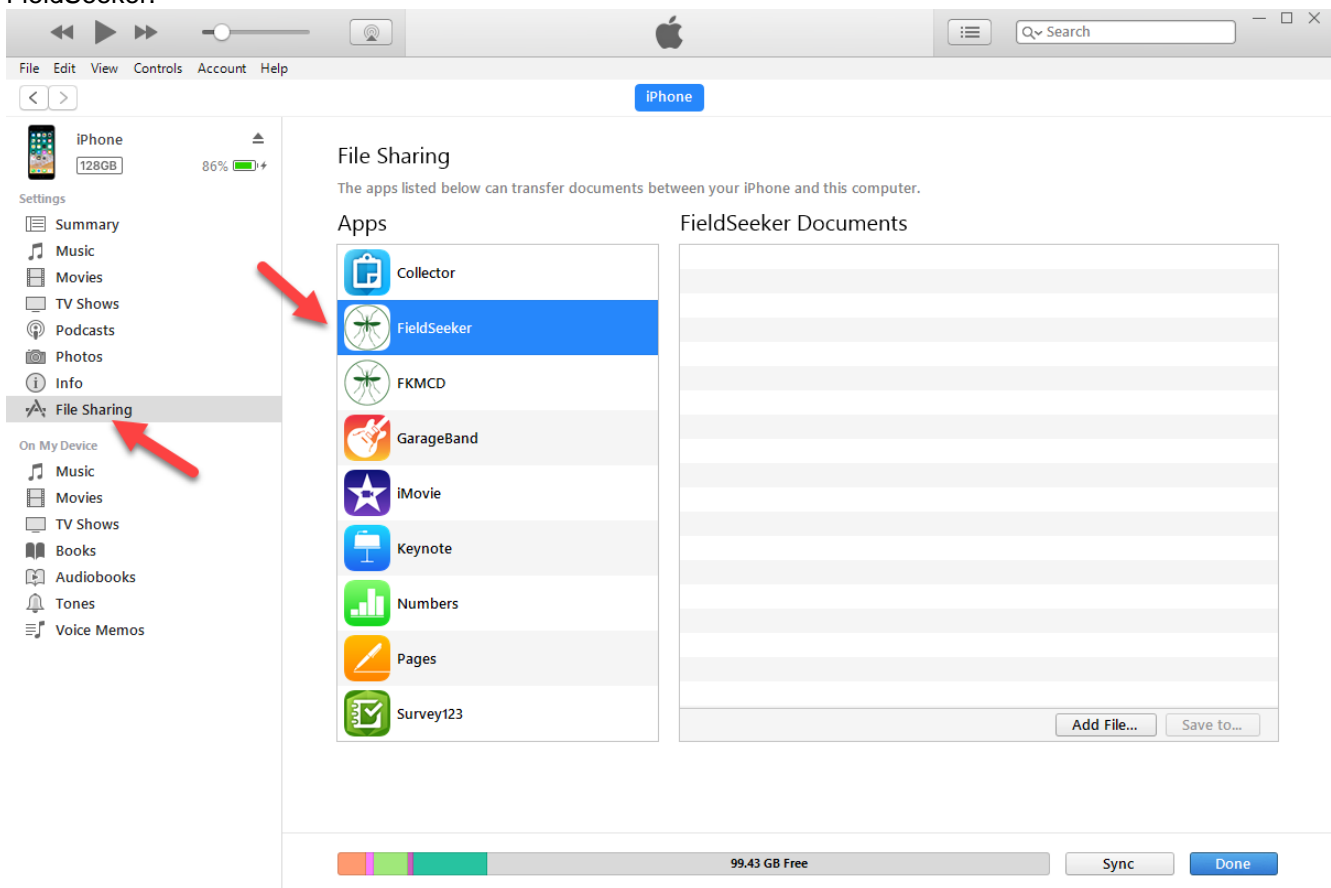
First, place the TPK file in a folder called "importedTPK". The TPK file can be called whatever you like, but the folder has to be named this way. There can be one and only one TPK file in that folder.

2

154 1<sup>st</sup> Avenue West, Jerome, ID 83338  
 Ph: 208-324-8006 <http://www.frontierprecision.com>



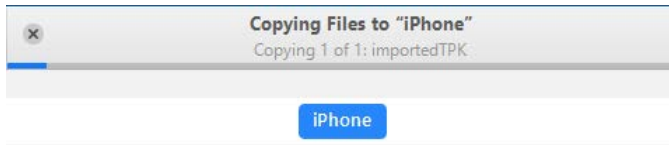
Connect your device to your computer. When iTunes starts, click on your device, then File Sharing. Select FieldSeeker.



3

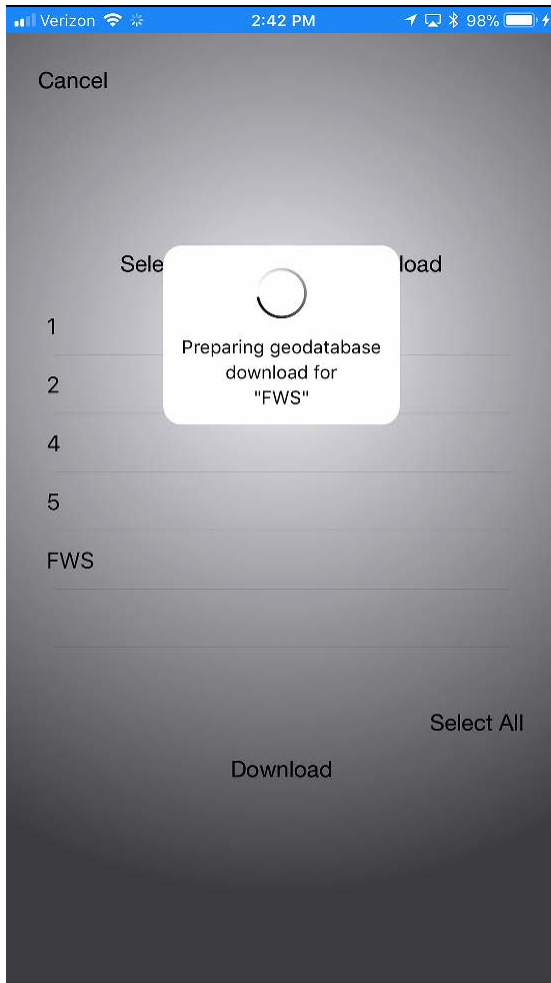
154 1<sup>st</sup> Avenue West, Jerome, ID 83338  
Ph: 208-324-8006 <http://www.frontierprecision.com>

Drag the entire importedTPK folder to the FieldSeeker Documents area. A "Link" icon will appear and when you release your mouse button the file will begin to copy over.



## Verify Results in FieldSeeker Mobile Native iOS

After the file is copied over successfully, log into FieldSeeker Mobile Native iOS. You can confirm that the configuration setting is set correctly and the file is copied correctly by going to Tools > Download Data. When you select a map area to download, it should skip the part where it attempts to download a tile package (because one is already present) and go straight to the step of downloading the geodatabase.



4

154 1<sup>st</sup> Avenue West, Jerome, ID 83338  
Ph: 208-324-8006 <http://www.frontierprecision.com>